



World's First 90' Aluminum Scooter Building with 24 cars all racked on one trailer

## Scooter<sup>®</sup> TM 2700

### A Showman's Answer to a Difficult Problem Portability

Majestic has successfully and efficiently designed and manufactured a 90' Aluminum Scooter Building with 24 full size bumper cars all on one trailer. There is no undercarriage or axles to remove. This ride displays European flair, but is American built.

TM 2700, Majestic's answer to a difficult problem.



60,000 lbs. trailer weight (8' 6" W/ 13' 4" H/ 48' L)



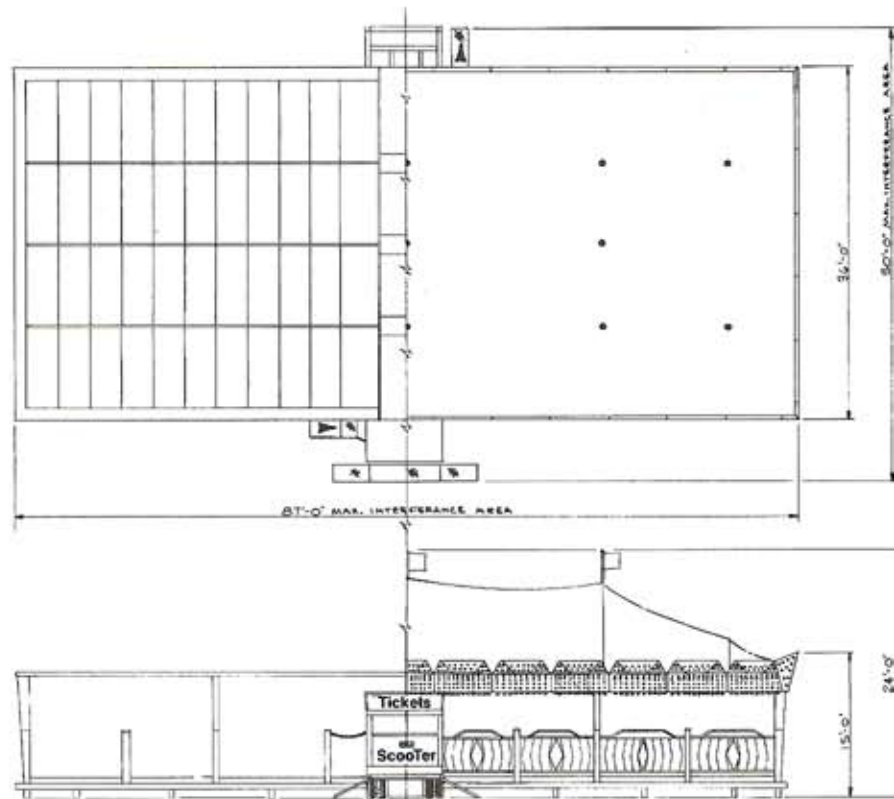
Set-up time: 5 men, 5 hours

Majestic Manufacturing, Inc., 4536 Rt. 7, New Waterford, Ohio 44445  
Phone 330/457-2447 — 457-7280 — FAX 330/457-7490

# Specifications

## TM 2700 Scooter® Bldg.

DIMENSIONS:	ERECTED	87' x 50'
	DECK SPACE	2720 square feet
	FOLDED	48' x 8'6" x 13'4" (LxWxH)
WEIGHT:	EMPTY	48,696 lbs.
	WITH 24 CARS	60,000 lbs.
ELECTRICAL:	BUILDING	220 volt 3 phase 35KW
	CARS	D.C. motor 40 to 70 volts
	RECTIFIER	220 volt 1 phase variable voltage
	SCENERY	175 total amps. of scenery
LIGHTING:	SCENERY	computer controlled
	POST	F 40 fluorescent lights
HYDRAULICS:	BUILDING	12 volt system solenoid activated hydraulic valves
		Integral cartridge locking valve cylinders
COLORS:	SCENERY	Polished stainless steel and aluminum with colored decals
	TOP	Choice of colors, fire retardant
	POSTS	Colored lexan
	TRAILER	Dupont Centari purple
CARS:		24 double seat Barbieri bumper cars complete with safety package
SUSPENSIONS:		Tandem air ride
SET-UP TIME:		5 men, 5 hours



The TM-2700 Scooter building is the very first Scooter that, both the building and the 24 bumper cars rack on one trailer. It is constructed mainly of aluminum for lower maintenance and high portability. This Scooter displays a European flair and is manufactured in the United States by Majestic Manufacturing, Inc.

